

JEUX-7510

Flatbed Ultrasonic Welding Machine

JEUX



A modern ultrasonic welding-machine needs performance, flexibility and must be easy to operate.

The new JEUX-7510 uses high tech components to make precise working at the highest level possible. Numerous features allow an individual machine configuration for **maximum productivity** and **reproductivity** in serial production.

The new JEUX-7510 sets a new standard in the world of welding products. This includes the **brand-new software package**, which facilitates operation for both beginners and experienced professionals.

The newly developed **JEUX-7510 ultrasonic-package** ensures absolutely precise and constant amplitude-values even at high speeds and sensitive materials.



Accessories

Border seaming

In some applications, it is necessary to combine a wide weld seam with a closely attached cutting seam. This is where JEUX-7510 edge trimmer comes into operation. It allows both processes in one step. The pressure force of the welding seam and the cutting seam can be set separately.

The new JEUX-7510 systems enable maximum reproducibility through its electrical pressure control. All parameters can be saved per product and seam.



C/W-Package

In addition to continuous welding, the JEUX-7510 machine offers the possibility of Cut & Seal. This very flexible technique allows simultaneous cutting and welding of most thermoplastic materials. Of course, a simple separation via ultrasonic with simultaneous edge sealing is also possible. JEUX-7510 offers a wide and steadily increasing spectrum of accessories for this purpose.



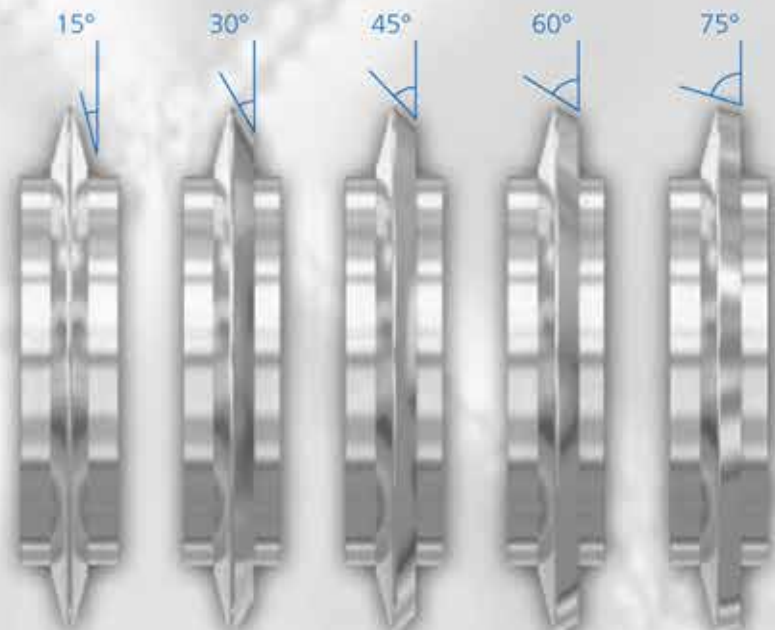
Cutting Wheels

There are numerous standard cutting wheels available. All cutting wheels are made of an appropriate material with corresponding hardening. The following wheel diameters are available: 20 mm, 25 mm, 40mm, and 65mm.

Anvil wheels

JEUX-7510 provides lots of different anvil-wheels, which can be changed in quickly.

Basically every structure can be produced upon request of the customer (for example the embossing of a corporate logo).



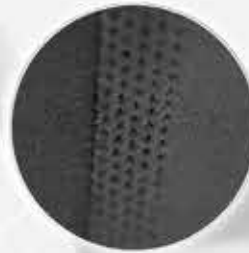
A new trend demands new challenges

Modern materials such as technical textiles, nonwoven or synthetic materials demand for innovative joining techniques. Jeux 7510 offers an advanced welding technique. Its reliability and precision will meet the quality standards of tomorrow.



Elastic Overlap Seams

Achieve highest omnidirectional elasticity by selective welding structure and avoid rough surfaces.



Wear Comfort

No rubbing, no pinching. Extremely flat seams guarantee highest wear comfort and assure long life elasticity.





Design diversity
A wide range in the seam optics by the use of individualized anvil wheel-structures.



Seamless Welding
The ultra-thin CW-seam can be taped in an additional step to increase maximum durability. The seam is airproof and not noticeable for the skin.



Airproof Overlap Seams
Safety cloth is welded by a 10mm overlap seam. Durability and tightness can be achieved in one working step.





Wheel Database

A core component of the JEUX-7510 machine is the wheel database. Every available anvil and cutting wheel is visualized and can be selected per product and seam. Behind each wheel a multitude of parameters are stored. That way machine specific calibrations needed for each wheel shape can be loaded instantly.

The database can be updated online by cloud-services or via USB Flash Drive.

Model name	JEUX-7510-T	JEUX-7510-S
Ultrasonic Frequency	35 kHz	
Ultrasonic Generator	Digital generator DG1 400W	
Sonotrode	10mm width titanium Sonotrode	10mm width cutting Sonotrode
Contact Pressure	Digital pressing-device with 350N pressure (no compressed air)	
Velocity	max 12m/min (39 ft/min)	
Number of Actuators	2	
Seam width	max. 10mm (0.39 inch)	
User-interface	7" Multi-Touch-Display	
Power supply	230V, 50 Hz switchable to 110V, 60Hz	
Air pressure	not required	

JEUX