

DOUBLE SIDE BLINDSTITCH MACHINE



FEATURE:

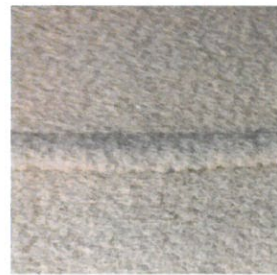
Used for double stitches. The sewing traces can not be seen from the surface of the finished fabric, keeping the clothing neat and nice by the concealed joint technique. No traces can be seen from the joint parts for the double stitching hemming design. All of the stitches produced by the Blind stitching machine are hidden inside the stitch hem and fabric.



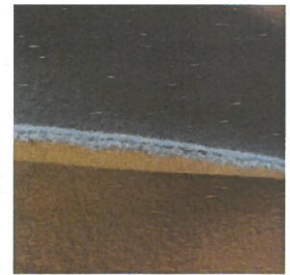
Model: 313
Fabric Joining













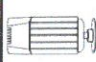

Model: 360
Edge Sewing



Model: 313
Stitch Sample



Model: 360
Stitch Sample

 缝制速度 Sewing speed	 缝线根数 Thread number	 使用机针 Needle	 单链缝(mm) Single chain stitch	 立式旋梭 Vertical Rotary hook	 针定位 Needle positioning	 切线器 Thread trimmer	 电子控制 Computer control	 加油方式 Oil feeding	 空气压力 Air pressure	 电机功率 Motor power	 电源 Input
800-1000 stitches/min	2	1717 DC	*	*	*	*	*	锭子油 spindle oil	0.5MPa	0.4kw	220V/50Hz